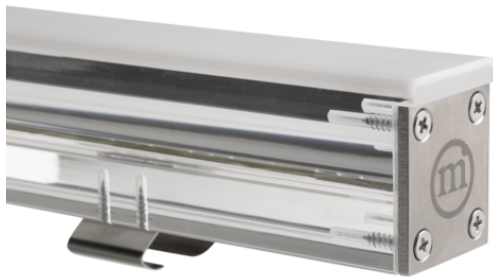


LINEO 2.2

LINEO 2.2 1510mm OPAL RGBW

Cod: **LNE02PBK000A00**



IdroSkud® protection system

- polarity reversal protection
- voltage spikes protection
- water infiltration protection



Protection class III

Designed to be supplied from a separated extra-low voltage (SELV) power supply



IP 66

Protected against powerful power jets, 100 liters per minute



IP 67

Protected against temporary immersion (30 minutes) up to 1 meter



IK 10

Protected against impact of 20 J



High temperatures

Design to withstand temperatures up to +50° C



Driver-over

Fixture design to withstand a static load up to 20 kN



CX - Extreme

corrosion resistance level ISO 9223



RGBW luminaire

Light source allows to mix colours controlling four channels



Mizar warranty

5 years warranty



Technical description

Linear inground luminaire, drive-over, suitable for outdoor environments (IP66/IP67), with operating temperature range: -20°C / +50°C. The body is made of PMMA, transparent and opal on the upper side; the endcaps are made of 316L stainless steel. The light source consists of Chip Led SMD3014 (4000K) and Led SMD3528 (RGB), powered at 24V with built-in driver. The luminous flux makes it ideal for marking pedestrian and driveway paths, or creating light cuts on floors, walls and ceilings. Color rendering index CRI > 80. Lineo is equipped with IdroSkud® system to protect electronic components from voltage spikes, polarity reversal and water infiltration. Installation accessories are provided (floor and plasterboard outercase; cable extensions up to 15 m).

Lighting data

Source type	SMD chip 3014 + SMD chip	Photobiological risk	RG0
	3528	ULR	100.00%
CCT	RGBW (4000K)	BUG Rating	B0 U1 G0
CRI	> 80	CIE Flux Code	0 0 0 0 100
MacAdam (SDCM)	3	LED lifetime	L80 B10 50.000h
Source lumen output (lm)	2814	Efficiency class	This product contains a light source of energy efficiency class (EU2019/2015): E
Luminaire lumen output (lm)	591		
Light emission	Diffused		
Beam angle	120°		

Mechanical data

Width (mm)	27	Diffuser material	Opal PMMA
Length (mm)	1510	Class ISO 9223	CX
Height (mm)	49	Optical optional	None
Weight (g)	1320	Maximal working temperature	+50° C
IP Rating	IP66 / IP67	Minimal working temperature	-20° C
IK rating	IK10	Maximal static load (kN)	20
Finishing colour	Opal white	Walk-over	Yes
Frame material	Stainless steel 316L	Driver-over	Yes
Body material	Trasparent PMMA	Maximal surface temperature	+50° C
External screws material	Stainless steel 316L (A4)	Areas EN 60598-2-13	A1 / A2 / A3 / A4

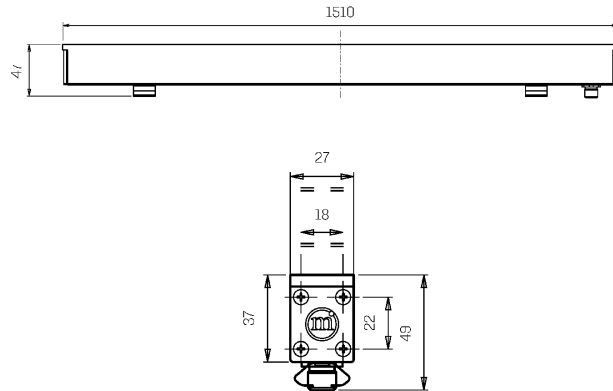
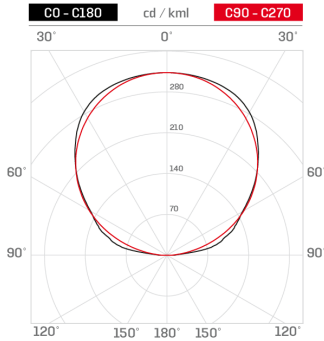
Electrical data

Nominal power (W)	36	Electrical connection	Parallel connection
Power supply (input power type)	Costant voltage - 24V	Idroskud® protection	Yes
Ballast	Remote	Inverse polarity protection	Yes
Insulation class	III	Voltage spikes protection	Yes
Dimmable	Yes		
Connector type	M12 - 5 poles IP67		
Power cable length	0,4 m		

Photometry

Technical drawing

Diffused



Accessories



FLOOR OUTERCASE 1511 MM

Outercase PC for floor 1511mm LINEO

Cod: LNEZZZ002



PLASTER OUTERCASE 1511 MM

Outercase PC for plasterboard 1511mm LINEO

Cod: LNEZZZ005



EXTENSION 0,5 M

5-pole extension 0.5m OT/Ni rings for LINEO

Cod: LNEZZZ012



EXTENSION 1 M

5-pole extension 1m OT/Ni rings for LINEO

Cod: LNEZZZ013



EXTENSION 1,5 M

5-pole extension 1.5m OT/Ni rings for LINEO

Cod: LNEZZZ014



EXTENSION 5 M

5-pole extension 5m OT/Ni rings for LINEO

Cod: LNEZZZ015



EXTENSION 10 M

5-pole extension 10m OT/Ni rings for LINEO

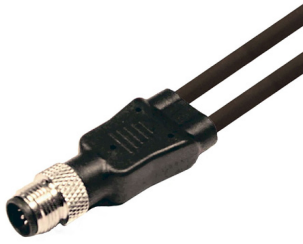
Cod: LNEZZZ016



EXTENSION 15 M

5-pole extension 15m OT/Ni rings for LINEO

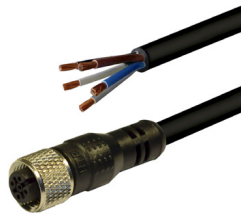
Cod: LNEZZZ017



SPLITTER 2 WAY

2-way 5-pole splitter with OT/NI rings for LINEO

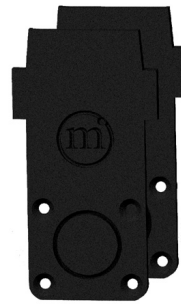
Cod: LNEZZZ019



POWER CABLE

Power cable 5 poles - M12 female 1,5m

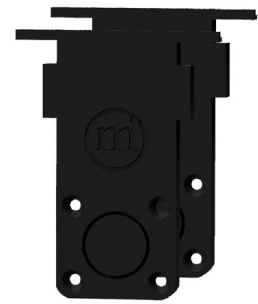
Cod: LNEZZZ021



OUTERCASE HEAD KIT

Head kit for ground LINEO outercase

Cod: LNEZZZ022



PLASTER OUTERCASE HEAD KIT

Head kit for plasterboard LINEO outercase

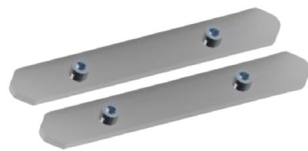
Cod: LNEZZZ023



OUTERCASE FIXING KIT

Fixing kit for LINEO outercase

Cod: LNEZZZ024



OUTERCASE COUPLING KIT

Bracket kit for coupling LINEO outercase

Cod: LNEZZZ025



EXTRACTION KIT

Extraction kit from outercase for LINEO

Cod: LNEZZZ026



RGBW CONTROL UNIT

Control unit WT5 5-channel RGBW PWM/WiFi

Cod: MID0023



NOT DIMMABLE POWER SUPPLY

Power supply DC 24V 70W 2,9A IP67

Cod: MID0028



RGBW REMOTE

Remote control RGBW RT 4zone RF 2.4GHz

Cod: MID1000



RGBW TOUCH PANEL

Touch wall panel RGBW 4 zone

Cod: MID1001