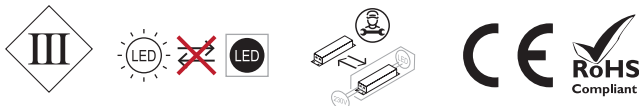




power	6/12/18 W Chip Led SMD3014 and Led3528 RGB
power supply	24V Constant Voltage- driver integrated
insulation class	III Class
IP rating	IP66 / IP67
IK rating	IK 10
operating temperature	-20°C / +50°C
size	mm 27 x 49 x 510/1010/1510
light source flux	423 / 846 / 1269 lm (4000K) 99 / 198 / 297 lm (R red) 337 / 674 / 1011 lm (G green) 79 / 158 / 237 lm (B blue)
effective flux	85 / 170 / 250 lm (4000K) 20 / 46 / 70 lm (R red) 70 / 135 / 203 lm (G green) 18 / 32 / 48 lm (B blue)
beam angle	widespread
CCT	4000K - RGBW
CRI	> 90
BIN selection	3 Step MacAdam
body material	PMMA - trasparent
screen	PMMA - opal
side fixture heads	316L stainless steel
gasket	trasparent silicone
installation	with formwork
power cable	0,40 cm with quick connector
electrical connection	parallel connection
weight	615 g / 975 g / 1320 g
protection system	IdroSkud® System _ polarity reversal protection _ voltage spikes protection _ water ingress protection

This product contains a light source of energy efficiency class **E**.



DISPOSAL OF MATERIALS

Dispose of the product in an eco-compatible manner and in accordance with national legislation



For Countries in the European Union:
Pursuant to the Directive no. 2012/19/EU on waste electrical and electronic equipment (WEEE).

The crossed out wheellie-bin symbol on the equipment or its packaging means that when the product reaches the end of its useful life it must be collected separately from other waste. Proper separate collection of the discarded equipment for the later environmental-friendly recycling, processing and disposal, helps to avoid any negative impact on the environment and health and encourages re-use and recycling of the materials the equipment is made of.

In each individual Member State of the European Union this product is required to be disposed of in accordance with Directive 2012/19/EU as implemented in the Member State where the product is disposed of.

For further information please contact REER or your local dealer.

The precise and complete observance of all rules, indications and prohibitions set out in these instructions is an essential requirement for the correct operation and use of the product. Mizar, therefore, declines all responsibility for anything deriving from the non-observance, even partial, of these instructions.

Specifications subject to change without notice.
Total or partial reproduction is prohibited without Mizar permission.



8543357

mizar

MADE IN ITALY



LINEO 2.0 | 2.1 | 2.2 RGBW

LINEAR RECESSED LUMINARE

OPERATING AND INSTALLATION INSTRUCTIONS

8543357_0

MIZAR is a REER S.p.A. brand
via Carcano 32 | 10153 Turin | ITALY
Ph. +39 011 9969833
e-mail: aftersales@mizar.it | www.mizar.it

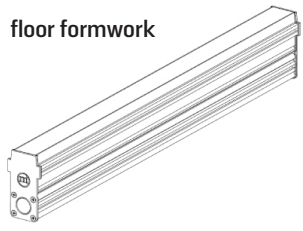


WARNING

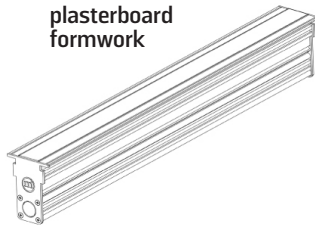
- ⚠ Read the following instructions carefully and keep them.
- ⚠ Technical product data can be found on the back of the sheet and on the product label.
- ⚠ Always switch off the power supply before installation or maintenance.
- ⚠ The device must be installed by qualified personnel. MIZAR accepts no liability if installation is not carried out in accordance with current standard.
- ⚠ Modifications or tampering with the product, not authorized by MIZAR, void all warranty conditions.
- ⚠ Product for indoor and outdoor use.
- ⚠ Never cover visible parts of the product.
- ⚠ No metal parts must be in direct contact or come into contact with aggressive chemicals (fertilisers, aggressive detergents)
- ⚠ Do not stare at the light source during its operation.
- ⚠ Clean the device periodically, avoiding dirt accumulation (at least twice a year).
- ⚠ Please contact MIZAR for Led replacement.
- ⚠ If the screen breaks, the product cannot be used; contact Mizar for replacement.

ACCESSORIES NECESSARY FOR PRODUCT INSTALLATION

floor formwork

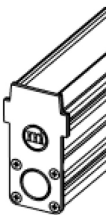


plasterboard formwork

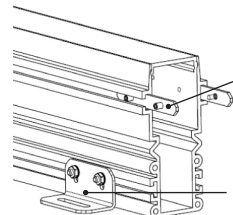


The formwork is equipped with a disposable cover profile, to protect the interior from dirt and material during installation work

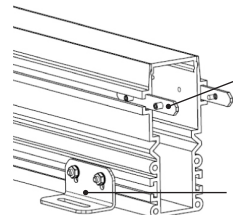
side formwork head



junction brackets to install multiple formwork in line

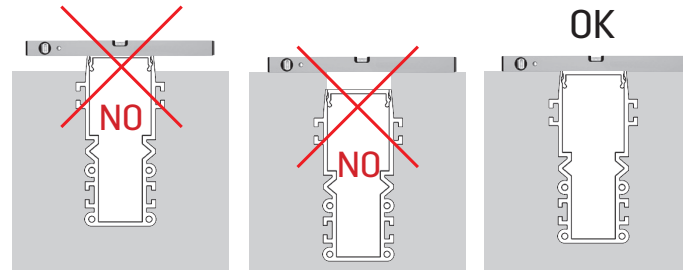


fixing brackets to fix the formwork to the screed

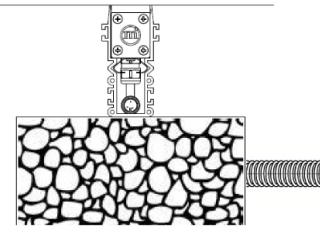


INSTALLATION OF FORMWORK ON THE GROUND

Prepare a housing of the formwork so that the upper edge is perfectly coplanar to the floor level.

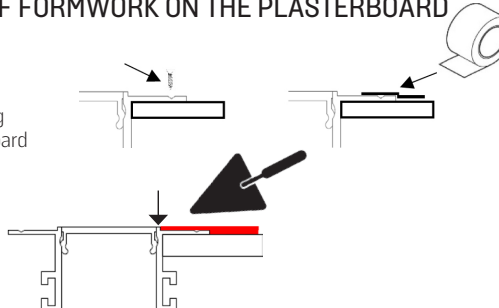


The bottom of the formwork must be in contact with draining material in order not to allow water to stagnate for long periods and to facilitate drainage through pipes.



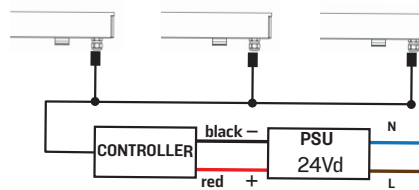
INSTALLATION OF FORMWORK ON THE PLASTERBOARD

Fix the formwork to the plasterboard panel with 2.9x13 self-tapping screws or with plasterboard tape



Smooth the formwork to the panel up to the mark indicated by the arrow

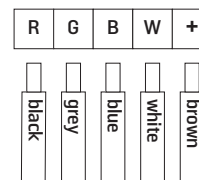
Parallel connection instruction



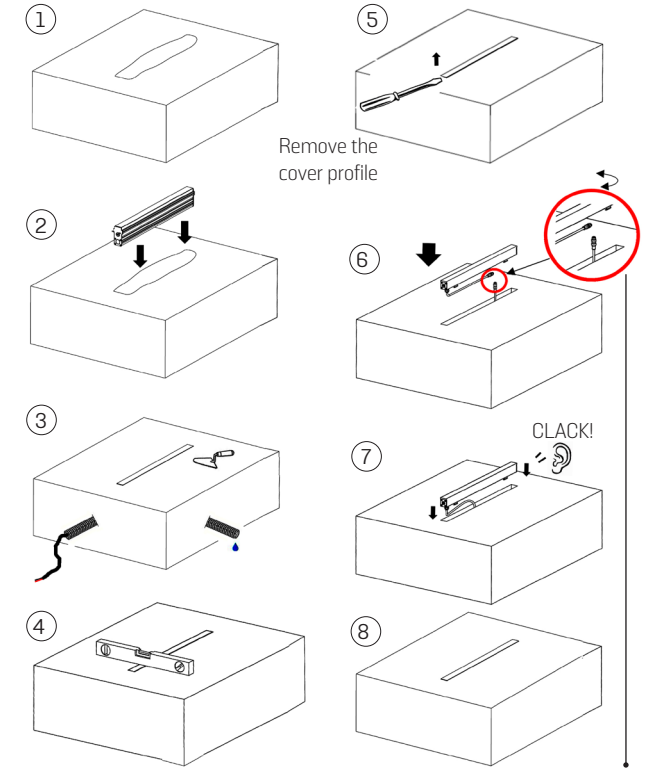
the distance from the power supply to the last luminaire must not exceed 15 cm

Controller wiring

For better safety we recommend using Mizar accessories.

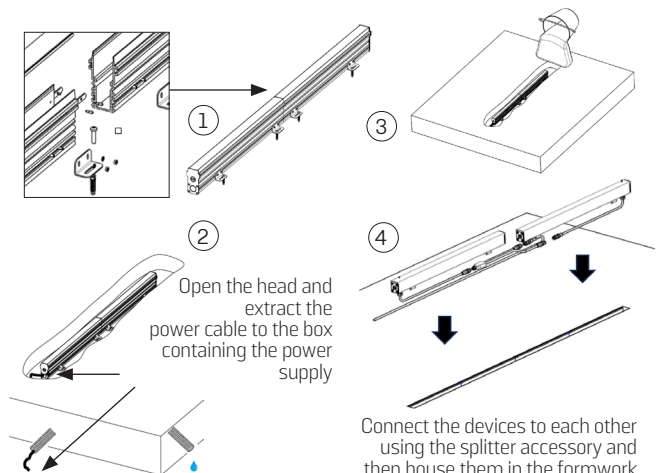


FORMWORK AND FIXTURE INSTALLATION



MIZAR electrical connection accessories they do not require self-amalgamating tape or waterproof junction box.

INSTALLAZIONE DI PIÙ APPARECCHI IN LINEA



Connect the devices to each other using the splitter accessory and then house them in the formwork