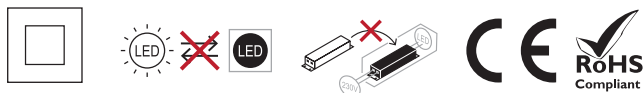




power	3W single chip Power Led (Quantum 1.1) 7 W single chip Power Led (Quantum 2.1)
power supply	220 Vac - driver integrated
insulation class	II Class
IP rating	IP65
IK rating	IK 06
operating temperature	-20°C / +50°C
size	55x75x127 mm (Quantum 1.1) 78x109x 185 mm (Quantum 2.1)
light source flux	227 lm (3000K - Quantum 1.1) 410 lm (3000K - Quantum 2.1)
effective flux	135 lm (3000K - Quantum 1.1) 305 lm (3000K - Quantum 2.1)
beam angles	10° - 25° - 40° - ellipt. 10° x 45° (Quantum 1.1) 5° - 20° - 60° - ellipt. 15° x 60° (Quantum 2.1)
CCT	2700K - 3000K - 4000K
CRI	> 90
BIN selection	3 Step MacAdam
body material	die-cast aluminium EN AB46100
finishing	first coat with protective primer followed by epoxy-polyester protective coating
screen	silk-screened extra clear temperd glass th. 5 mm (Quantum 1.1) th. 6 mm (Quantum 2.1)
electrical connection	connection to the main voltage
weight	500 g (Quantum 1.1) 1200 g (Quantum 1.2)

Quantum 1.1 contain an energy class **F** light source.
Quantum 2.1 contain an energy class **G** light source.



DISPOSAL OF MATERIALS

Dispose of the product in an eco-compatible manner and in accordance with national legislation



For Countries in the European Union: Pursuant to the Directive no. 2012/19/EU on waste electrical and electronic equipment (WEEE).

The crossed out wheellie-bin symbol on the equipment or its packaging means that when the product reaches the end of its useful life it must be collected separately from other waste. Proper separate collection of the discarded equipment for the later environmental-friendly recycling, processing and disposal, helps to avoid any negative impact on the environment and health and encourages re-use and recycling of the materials the equipment is made of.

In each individual Member State of the European Union this product is required to be disposed of in accordance with Directive **2012/19/EU** as implemented in the Member State where the product is disposed of.

For further information please contact REER or your local dealer.

The precise and complete observance of all rules, indications and prohibitions set out in these instructions is an essential requirement for the correct operation and use of the product. Mizar, therefore, declines all responsibility for anything deriving from the non-observance, even partial, of these instructions.

Specifications subject to change without notice.
Total or partial reproduction is prohibited without Mizar permission.



8543330

mizar

MADE IN ITALY



QUANTUM 1.1 - 2.1

SINGLE-EMISSION WALL-MOUNTED
LUMINARE FOR OUTDOOR

OPERATING AND INSTALLATION INSTRUCTIONS

8543330_0

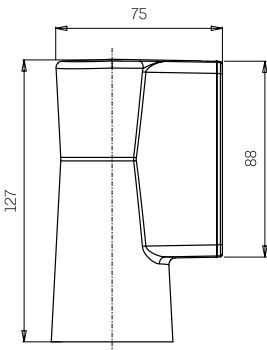
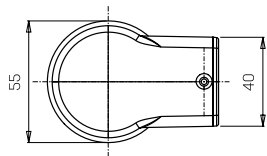
MIZAR is a REER S.p.A. brand
via Carcano 32 | 10153 Turin | ITALY
Ph. +39 011 9969833
e-mail: aftersales@mizar.it | www.mizar.it



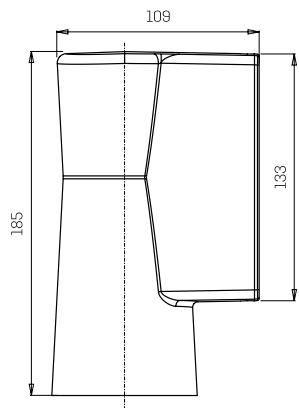
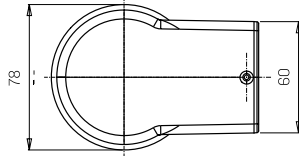
WARNING

- ⚠ Read the following instructions carefully and keep them.
- ⚠ Technical product data can be found on the back of the sheet and on the product label.
- ⚠ Always switch off the power supply before installation or maintenance.
- ⚠ The device must be installed by qualified personnel. MIZAR accepts no liability if installation is not carried out in accordance with current standard.
- ⚠ Modifications or tampering with the product, not authorized by MIZAR, void all warranty conditions.
- ⚠ Product for indoor and outdoor use.
- ⚠ Never cover visible parts of the product.
- ⚠ No metal parts must be in direct contact or come into contact with aggressive chemicals (fertilisers, aggressive detergents)
- ⚠ Do not stare at the light source during its operation.
- ⚠ Clean the device periodically, avoiding dirt accumulation (at least twice a year).
- ⚠ Please contact MIZAR for Led replacement.
- ⚠ If the glass breaks, the product cannot be used; contact Mizar for replacement.

QUANTUM 1.1



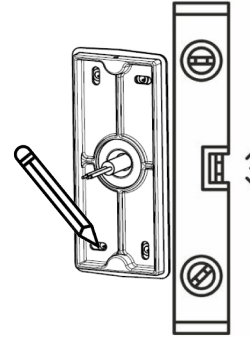
QUANTUM 2.1



WALL INSTALLATION

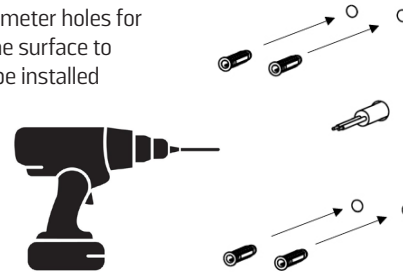
1

Mark the 4 holes corresponding to the holes in the fixing plate using a spirit level for correct vertical positioning



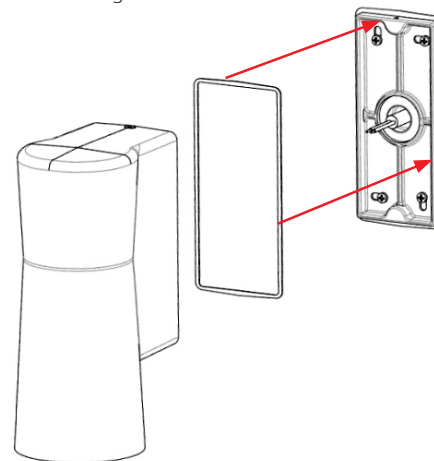
2

Drill four Ø5 mm diameter holes for dowels specific to the surface to which the unit is to be installed



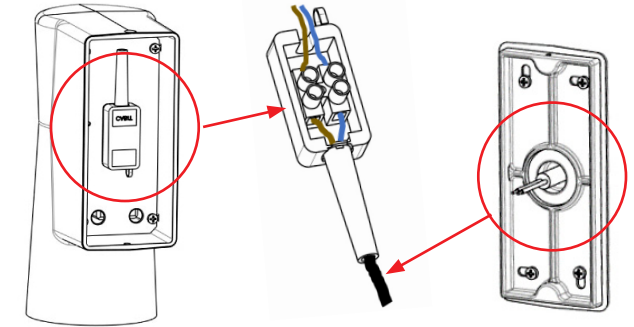
3

Apply silicone gasket to fixing plate



3

Connect the 230 Vac power line to the terminal block, taking care to pass the cable through the rubber cap to ensure double insulation



4

Secure the unit to the plate using the two screws supplied



INSTALLATION OF THE PAINTABLE PRODUCT

Products treated with only primer paint are tested up to 3000 hours in salt spray; the final paint need not be applied immediately. Once the unit has been painted, remove the films protecting the glass.

