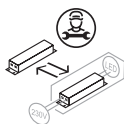
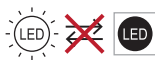




power	2W - single chip Power Led
power supply	24V constant voltage integrated driver
insulation class	III
IP/IK rating	IP65 - IK10
operating temperature	-20/+50°C
size	mm 44 x 95 x 50 (oval frame) mm 30 x 74 x 50 (rectangular frame)
light source flux	175 lm (3000K)
effective flux	25 lm (diffused) 20 lm (blade)
beam angle	Diffused
CCT	2700K - 3000K - 4000K
CRI	> 90
BIN selection	3 Step MacAdam
body material	aluminium anticorrosion 6082
finishing	first coat white protective primer followed by epoxy and polyester for corrosion resistance guaranteeing 1500h in salt spray
colours	black RAL9005 white RAL9003 anthracite RAL7016 corten
spring	302 stainless steel raw for springs
mounting	with formwork
power cable	40 cm FR5FOEM7 - AD8 2X0.5 mm ²
electrical connection	parallel
weight	136 g - 169g (rectangular frame) 147 g - 185g (oval frame)
protection	IdroSkud® System
accessories	wall or plasterboard formwork

This product contains an energy class **F** light source.



DISPOSAL OF MATERIALS

Dispose of the product in an eco-compatible manner and in accordance with national legislation



For Countries in the European Union:

Pursuant to the Directive no. 2012/19/EU on waste electrical and electronic equipment (WEEE).

The crossed out wheeled-bin symbol on the equipment or its packaging means that when the product reaches the end of its useful life it must be collected separately from other waste.

Proper separate collection of the discarded equipment for the later environmental-friendly recycling, processing and disposal, helps to avoid any negative impact on the environment and health and encourages re-use and recycling of the materials the equipment is made of.

In each individual Member State of the European Union this product is required to be disposed of in accordance with Directive **2012/19/EU** as implemented in the Member State where the product is disposed of.

For further information please contact REER or your local dealer.

The precise and complete observance of all rules, indications and prohibitions set out in these instructions is an essential requirement for the correct operation and use of the product. Mizar, therefore, declines all responsibility for anything deriving from the non-observance, even partial, of these instructions.

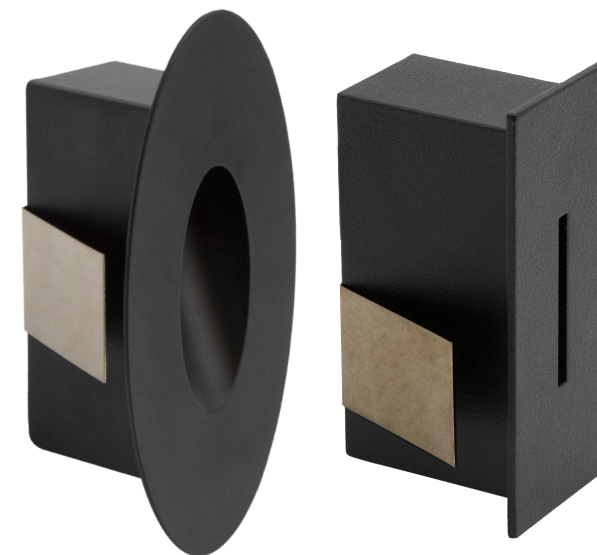
Specifications subject to change without notice.
Total or partial reproduction is prohibited without Mizar permission.



8543317

mizar

MADE IN ITALY



LUCIS

RECESSED PATH SPOTLIGHT

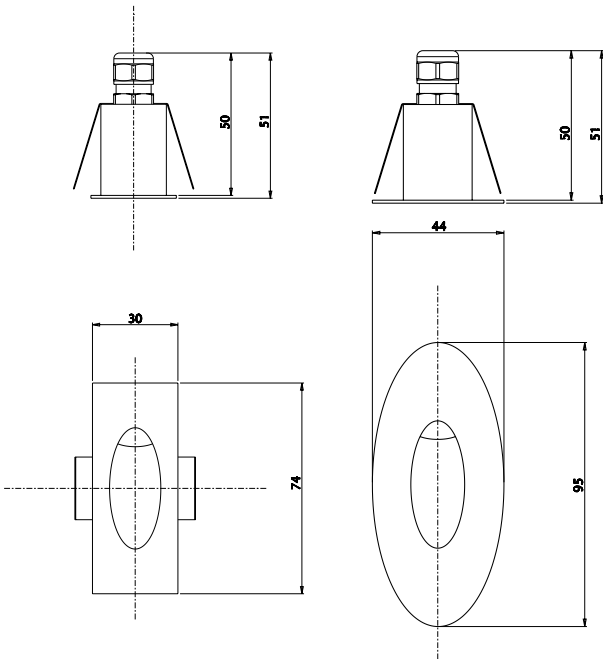
INSTRUCTION FOR USE AND INSTALLATION

8543317_0

MIZAR is a REER S.p.A. brand
via Carcano 32 | 10153 Turin | ITALY
Ph. +39 011 9969833
e-mail: aftersales@mizar.it | www.mizar.it

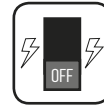
WARNING

- ⚠ Read the following instructions carefully and keep them.
- ⚠ Technical product data can be found on the back of the sheet and on the product label.
- ⚠ Always switch off the power supply before installation or maintenance.
- ⚠ The device must be installed by qualified personnel.
- ⚠ MIZAR accepts no liability if installation is not carried out in accordance with current standards.
- ⚠ Modifications or tampering with the product, not authorized by MIZAR, void all warranty conditions.
- ⚠ Product for indoor and outdoor use.
- ⚠ Never cover visible parts of the product.
- ⚠ No metal parts must be in direct contact or come into contact with aggressive chemicals (fertilisers, aggressive detergents)
- ⚠ Do not stare at the light source during its operation.
- ⚠ Clean the device periodically, avoiding dirt accumulation (at least twice a year).
- ⚠ Please contact MIZAR for Led replacement.

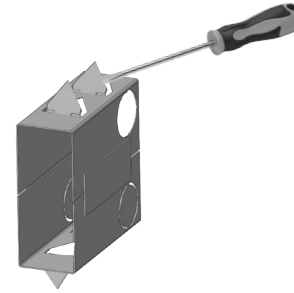


INSTRUCTIONS FOR LAYING THE FORMWORK IN THE WALL

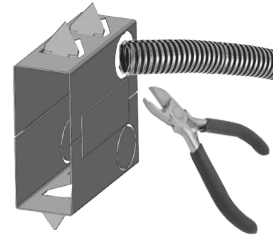
- ① CAUTION: Disconnect the power supply



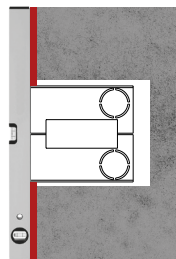
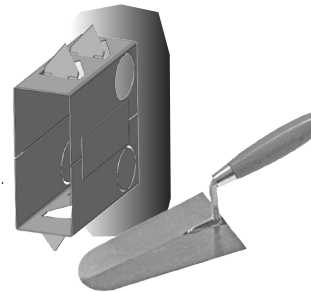
- ② Use a screwdriver to lift the fins of both the upper and lower parts of the formwork.



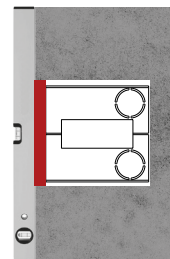
- ③ Use a bolt cutter to open one of the two holes for the corrugated pipe.



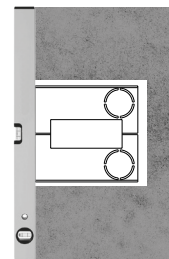
- ④ Insert the formwork into the wall recess and level it. The formwork must not protrude or retract from the wall line; it must be aligned.



NOT OK

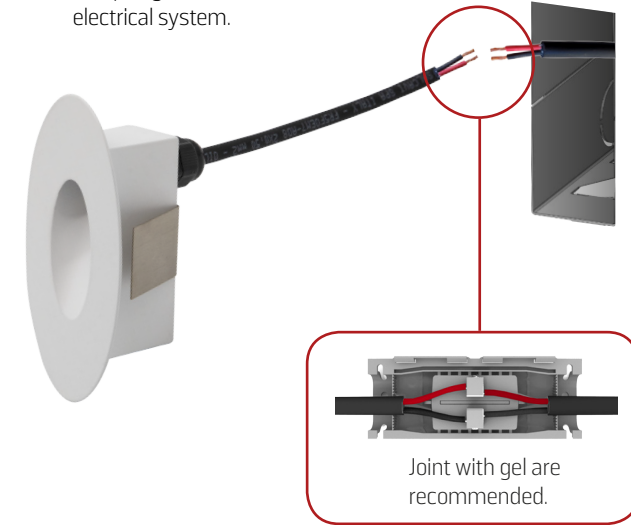


NOT OK



OK

- ⑤ Make the connection between the spotlight and the wall electrical system.



- ⑥ Fully insert the spotlight into fromwork.



- ⑦ Reconnecting the power supply.

