

mizar

Lighting Your Way

Coming
Soon
Products 2024

A new idea of light

MIZAR is excited to present you with its latest creations, carefully designed to offer refined lighting solutions and elegant materials that blend in perfectly with applications such as villas and gardens.




Inside this brochure, you will find a range featuring new types of installation, designed to adapt to the specific needs of your project, guaranteeing the correct distribution of light and allowing you to create emotional atmospheres.

In addition, we are proud to present our experiments with innovative materials, which offer not only superior performance but also impressive aesthetics.



mizar
Lighting Your Way

INGROUNDS		BOLLARDS
		
OCEANO NEW MATERIAL	ACUS 1.3	LUCIS BOLLARD

FLOODLIGHTS		
		
OCEANO PAINTED	QUANTUM FLOOD	VITRUM FLOOD

WALL RECESSED	CEILING MOUNTED
	
OCEANO WALL	QUANTUM CEILING



OCEANO new material

OUTDOOR INGROUND WITH SPECIAL RESIN FRAME WOOD-LIKE

OCEANO 2.0 and 3.0 now available with an new exclusive frame material. This special resin makes the product incredibly suitable for installation on wooden surfaces.

Wall recessed luminaire, suitable for outdoor use and immersed up to 10m (IP66/IP68), with range operating temperature range: -20°C / +50°C.

To offer maximum versatility of application the body can be made of aluminium or steel; the round frame in aluminium, steel or brass. The light source consists of a single chip 3W power LED supplied at 24V constant voltage with integrated driver.

The luminous flux from 120 lm to 153 lm makes them ideal for marking out walkways, stairs or for step lighting application.

The source is recessed for greater visual comfort.

The light colour temperature is available variants: 2700K, 3000K, 4000K with CRI > 90.

OCEANO 2.0 and 3.0 are equipped with the IdroSkud® system for the protection of electronic components against voltage spikes, polarity reversal and water infiltration.

Optionals for anti-glare (honeycomb or louvre) and installation accessories are provided (waterproof formwork and plasterboard spring).

The lenght of power cable is 0.4m; on request: 1.5m, 5m, 10m, 15m.



OCEANO
2.0

OCEANO
3.0

power	2W and 3W
power supply	24V constant voltage
insulation class	III class
IP rating	IP66 / IP68
operating temperature	-20°C / +50°C
size	Ø 40 x 76 and Ø 60 x 93 mm
lumen output	up to 120 lm (2.0) and up to 153 lm (3.0)
beam angles	10° - 36° - 60° - 10°x53° (2.0), 15° - 25° - 40° - 20°x43° (3.0)
CCT	2700K - 3000K - 4000K
CRI	> 90
BIN selection	2 Step MacAdam

lifetime	L80 B10 50.000 h
body materials	- anticorodal 6082 anodized 20µ aluminium - 316L stainless steel
frame materials	technopolymer
screen	tempered extra-clear glass - 6 mm (2.0), tempered extra-clear glass - 8 mm (3.0)
installation	with outer case / plasterboard spring
electrical connection	parallel
protection system	IdroSkud® System - polarity reversal protection - voltage spikes protection - water infiltration protection
made in	ITALIA



ACUS 1.3

WALK-OVER AND DRIVE-OVER OUTDOOR INGROUNDS



A new version is added to the ACUS series, now available in an RGBW version with DMX control. Inground luminaire, drive-over, suitable for outdoor use, with an operating temperature range of -20°C / +50°C.

To reduce weight and ensure resistance to wear, the body is made of aluminium and the round ring nut of steel.

The light source consists of multi-chip SMD LEDs supplied with constant current, for a maximum power of 13W.

The luminous flux with mixable colors makes it ideal for marking pedestrian path or illuminating façades and architectural details thanks to the color mixing optics with different beam angles: 14°, 30°, 45°.

The source is recessed for greater visual comfort.

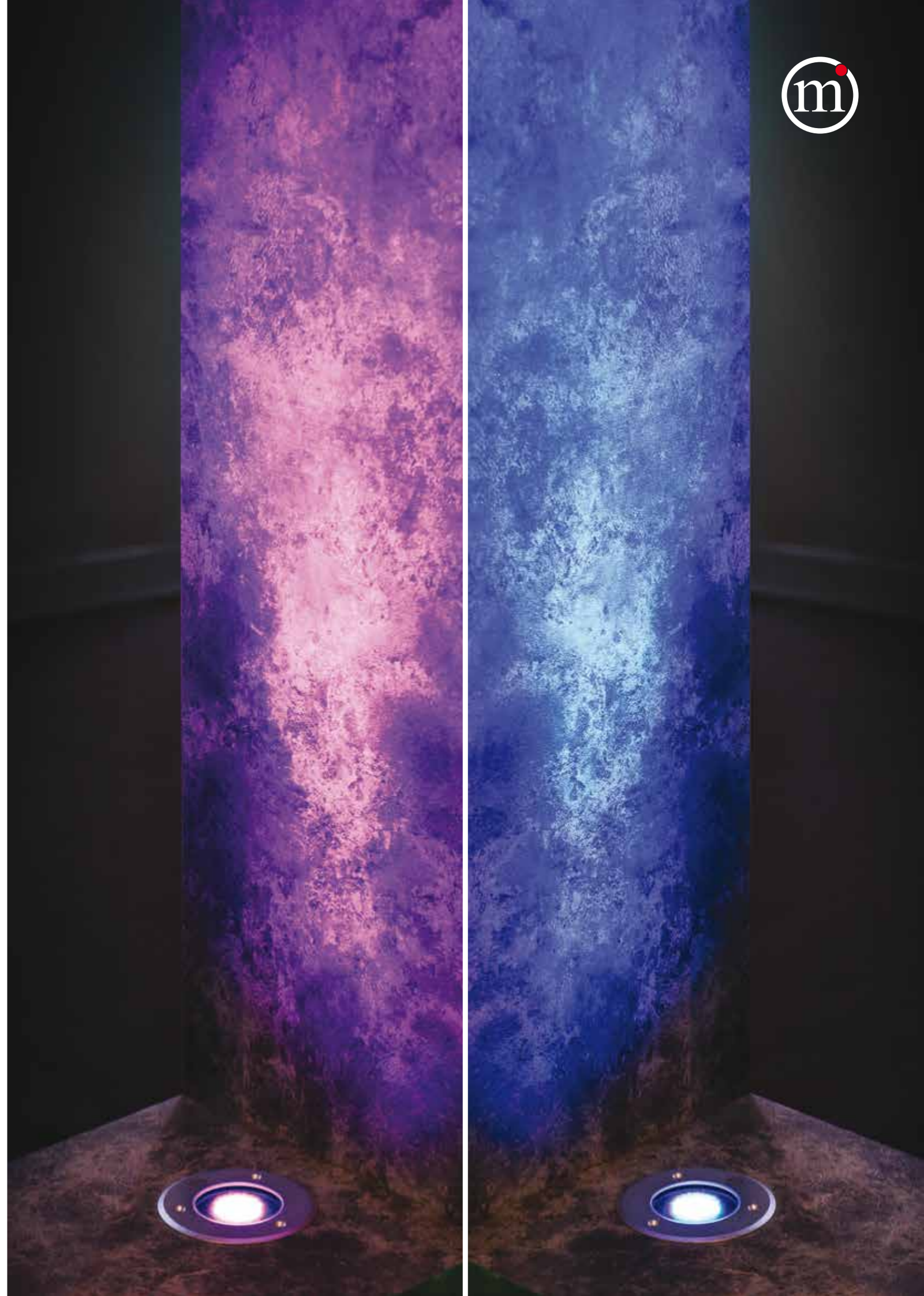
The white LED source color temperature is: 4000K.

Acus series is equipped with the IdroSkud® system to protect electronic components from voltage spikes, polarity reversal and water infiltration. Options for anti-glare (honeycomb and louvre) and installation accessories (drive-over outer case) are provided.

power	13W*
power supply	700mA constant current
insulation class	III class
IP rating	IP66 / IP67
IK rating	IK10
operating temperature	-20°C / +50°C
size	Ø 140 x 65 mm
effective flux	900 lm*
optics	TIR lens
beam angles	14° - 30° - 45°
CCT	RGBW (4000K)
CRI	> 90
BIN selection	3 Step MacAdam

lifetime	L80 B10 50.000 h
body materials	anticorodal 6082 black anodized aluminium
frame materials	electropolished shot peened 316L stainless steel
screen	tempered extra-clear glass 12 mm thick
installation	with outer case
power cable	connection via quick connector supplied
electrical connection	serial connection
protection system	IidroSkud® System _ polarity reversal protection _ voltage spikes protection _ water infiltration protection
made in	ITALIA

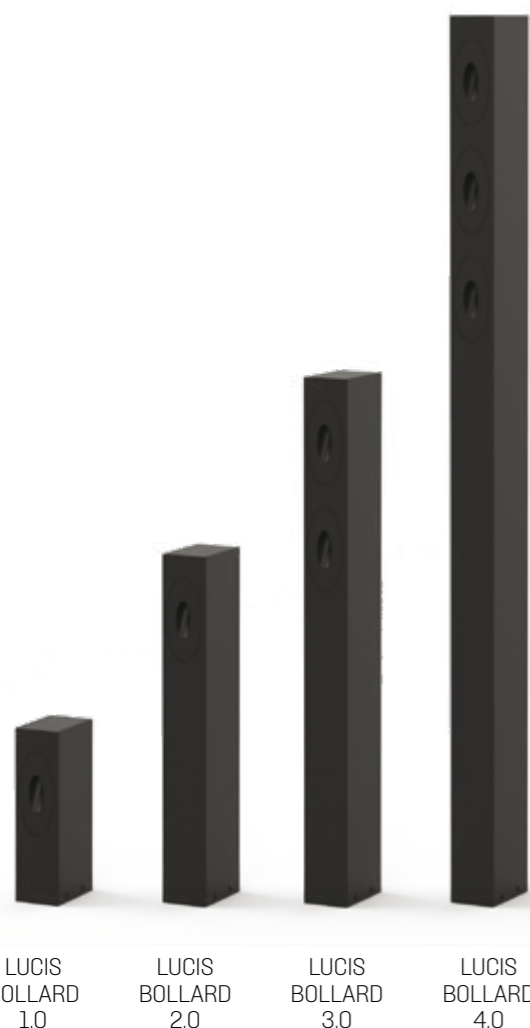
* Technical data estimated from the prototypes



LUCIS BOLLARD

OUTDOOR BOLLARD

The LUCIS series expands, with the addition of four bollards with a coordinated design with the existing step lights. Outdoor bollards, suitable for outdoor use (IP66/IP67), with a wide operating temperature range: -20°C / +50°C. The body is made of aluminium protected by an epoxy polyester paint that guarantees a corrosion resistance of 1500 hours in salt spray. Four finishes are available: white RAL9003, black RAL9005, anthracite RAL7016 and CORTEN. The light source consists of a single 2W power LED chip powered at 24V constant voltage with integrated driver. Two LED sources in 3.0 version, and three LED sources in 4.0. The optic consist of a oval opening for a circular diffuse light beam oriented towards the floor. The luminous flux from 25 lm of 1.0 and 2.0 make them ideal as a marker light for footpaths or stairways. Versions 3.0 and 4.0 with a flux up to 75 lm and higher body, make them ideal to light up pathways or gardens. Light colour temperature available in variants: 2700K, 3000K, 4000K with CRI > 90. Lucis series is equipped with the IdroSkud® system to protect electronic components from voltage spikes, polarity reversal and water ingress.



LUCIS BOLLARD 1.0
LUCIS BOLLARD 2.0
LUCIS BOLLARD 3.0
LUCIS BOLLARD 4.0

power	2W / 4W / 6W
power supply	220Vac integrated power supply
insulation class	II class
IP rating	IP66 / IP67
IK rating	IK 10
operating temperature	-20°C / +50°C
size	90 x 55 x 200 / 400 / 600 / 1000 mm
lumen output	up to 25 lm (1.0 and 2.0), up to 50 lm (3.0), up to 75 lm (4.0)
beam angles	diffused
CCT	2700K - 3000K - 4000K
CRI	> 90
BIN selection	3 Step MacAdam
lifetime	L80 B10 50.000 h

body materials	aluminium anticorodal 6082
finishing	first coat with protective primer followed by epoxy polyester for corrosion resistance guaranteeing 1500h in salt spray
colours	- white RAL9003 - black RAL9005 - anthracite RAL7016 - CORTEN
spring	302 stainless steel raw
power cable	0,4 m FR5FOEM7 - AD8 2X0.5 mm²
electrical connection	to power line
protection system	IdroSkud® System _ polarity reversal protection _ voltage spikes protection _ water infiltration protection
made in	ITALIA



OCEANO painted

OUTDOOR FLOODLIGHT

The range of OCEANO floodlights extends even further. Mizar launch the new versions in painted aluminum. Making them even more easily camouflaged in vegetation. Projector suitable for outdoor use and underwater up to 10m (IP66/IP68) with an operating temperature range of -20°C / +50°C. The body is made of aluminium protected by an epoxy polyester paint that guarantees a corrosion resistance of 1500 hours in salt spray. Four finishes are available: the new green RAL6009. The brackets are made in steel and allows the fixture's tilting to be adjusted. The light source consists of a single chip power LED (from 1W to 3W) supplied at 24V constant voltage with integrated driver. The luminous flux from 53 lm to 153 lm make them ideal for illuminating architectural details, garden plants or water features, thanks to different beam angles. The source is recessed for greater visual comfort. The light colour temperature is available variants: 2700K, 3000K, 4000K with CRI > 90. All OCEANO are equipped with the IdroSkud® system for the protection of electronic components against voltage spikes, reverse polarity and water ingress. There are optionals for anti-glare (honeycom) and installation in the ground are provided (spike). The power cable length is 0.4m; on request: 1.5m, 5m, 10m, 15m.



power	1W / 2W / 3W
power supply	24V constant voltage
insulation class	III class
IP rating	IP66 / IP68
IK rating	IK 07 / IK 09 / IK 10
operating temperature	-20°C / +50°C
size	Ø 23 x 44 x 46,5 mm Ø 30 x 76 x 62 mm Ø 45 x 93 x 83 mm
lumen output	up to 53 lm (size 5), up to 120 lm (size 6), up to 153 lm (size 7)
beam angles	15° - 25° - 40° - 20°x43° (size 5), 10° - 36° - 60° - 10°x53° (size 6), 10° - 25° - 40° - 10°x45° (size 7)
CCT	2700K - 3000K - 4000K

CRI	> 90
BIN selection	2 Step MacAdam
lifetime	L80 B10 50.000 h
body materials	anticorodal 6082 anodized 20µ aluminium
finishing	first coat with protective primer followed by epoxy polyester for corrosion resistance
colour	green RAL 6009
screen	tempered extra-clear glass - 4 mm / 6 mm / 8mm
electrical connection	parallel
protection system	IdroSkud® System _ polarity reversal protection _ voltage spikes protection _ water infiltration protection
made in	ITALIA

QUANTUM FLOOD

OUTDOOR FLOODLIGHT



QUANTUM FLOOD 1



QUANTUM FLOOD 2

The QUANTUM series is enriched with a range of floodlights, which maintain the family feeling, expanding the types of applications. Floodlights suitable for outdoor use (IP65) with an operating temperature range of -20°C / +50°C.

The body is made of aluminium protected by an epoxy polyester paint that guarantees a corrosion resistance of 1500 hours in salt spray.

Four finishes are available: white RAL9003, black RAL9005, anthracite RAL7016, CORTEN.



The light source consists of a single chip power LED (3W or 7W) powered by 220Vac (integrated power supply).

The luminous flux from 125 lm to 316 lm make them ideal as a light for illuminating facades and architectural details.

The light colour temperature is available variants: 2700K, 3000K, 4000K with CRI > 90.

Optionals for anti-glare (honeycom) and installation in the ground are provided (spike).

power	3W and 7W*
power supply	220Vac integrated power supply
insulation class	II class
IP rating	IP65
IK rating	IK 06
operating temperature	-20°C / +50°C
size	Ø 54 x 120 mm and Ø 78 x 178 mm
lumen output	up to 227 lm (size 1) and 410 lm (size 2)*
beam angles	15° - 25° - 40° - 20°x43° (size 1), 5° - 20° - 60° - 15°x60° (size 2)
CCT	2700K - 3000K - 4000K
CRI	> 90
BIN selection	2 Step MacAdam

lifetime	L80 B10 50.000 h
body materials	EN AB46100 die-cast aluminum
finishing	first coat with protective primer followed by epoxy polyester for corrosion resistance
colours	- white RAL9003 - black RAL9005 - anthracite RAL7016 - CORTEN - paintable primer
screen	tempered extra-clear glass - 6 mm black silkprinted
electrical connection	to power line
made in	ITALIA  

* Technical data estimated from the prototypes



VITRUM FLOOD

OUTDOOR FLOODLIGHT



VITRUM FLOOD 1



VITRUM FLOOD 2



VITRUM FLOOD 3

Floodlights suitable for outdoor use (IP66/IP68) with an operating temperature range of -20°C / +50°C.

The body is made of aluminium protected by an epoxy polyester paint that guarantees a corrosion resistance of 1500 hours in salt spray.

Four finishes are available: white RAL9003, black RAL9005, anthracite RAL7016, CORTEN, and the new green RAL6009.

The brackets are made in steel and allows the fixture's tilting to be adjusted.

The light source consists of a single chip power LED, from 3W to 11W, supplied at 24V constant voltage with integrated driver.

The luminous flux from 190 lm to 450 lm make them ideal for illuminating architectural details, garden plants or water features, thanks to different beam angles.

The source is recessed for greater visual comfort.



The light colour temperature is available variants: 2700K, 3000K, 4000K with CRI > 90.

All VITRUM FLOOD are equipped with the IdroSkud® system for the protection of electronic components against voltage spikes, reverse polarity and water ingress.

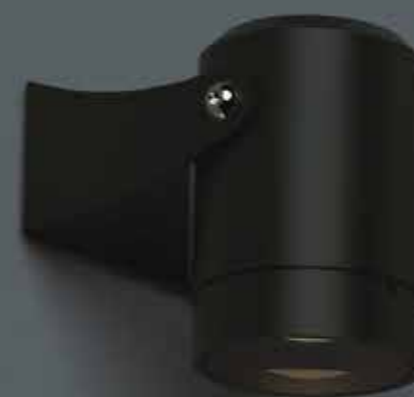
There are optionals for anti-glare (honeycom) and installation in the ground are provided (spike).

The power cable length is 0.4m; on request: 1.5m, 5m, 10m, 15m.

power	3W / 6W / 11W*
power supply	24V constant voltage
insulation class	III class
IP rating	IP66 / IP68
IK rating	IK 09
operating temperature	-20°C / +50°C
size	Ø 42 x 75 mm Ø 62 x 85 mm Ø 87 x 115 mm
lumen output	up to 190 lm (size 1), up to 250 lm (size 2), up to 450 lm (size 3)*
beam angles	10° - 36° - 60° - 10°x53° (size 1), 10° - 25° - 40° - 10°x45° (size 2), 5° - 20° - 60° - 15°x60° (size 3)
CCT	2700K - 3000K - 4000K
CRI	> 90
BIN selection	2 Step MacAdam

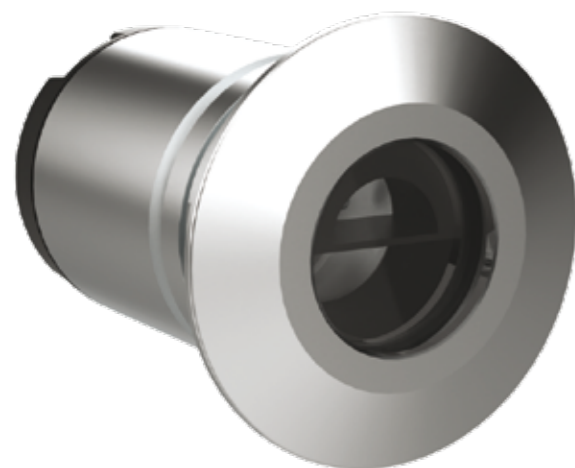
lifetime	L80 B10 50.000 h
body materials	anticorodal 6082 anodized 20µ aluminium
finishing	first coat with protective primer followed by epoxy polyester for corrosion resistance
colours	- white RAL9003 - black RAL9005 - anthracite RAL7016 - Corten - green RAL6009
screen	tempered extra-clear glass - 4 mm / 6 mm / 8 mm
electrical connection	parallel
protection system	IdroSkud® System - polarity reversal protection - voltage spikes protection - water infiltration protection
made in	ITALIA  

* Technical data estimated from the prototypes



OCEANO 3.0 WALL

OUTDOOR WALL RECESSED



OCEANO 3.0 now is suitable for wall recessed mounting too. Paired with the asymmetric louvre optional, the luminaire becomes a perfect path marker.

Wall recessed luminaire, suitable for outdoor use and immersed up to 10m (IP66/IP68), with range operating temperature range: -20°C / +50°C.

To offer maximum versatility of application the body can be made of aluminium or steel; the round frame in aluminium, steel or brass.

The light source consists of a single chip 3W power LED supplied at 24V constant voltage with integrated driver.

The luminous flux of 153 lm (3000K) makes it ideal for marking out walkways, stairs or for step lighting application.

The source is recessed for greater visual comfort.

The light colour temperature is available variants: 2700K, 3000K, 4000K with CRI > 90.

Oceano 3.0 is equipped with the IdroSkud® system for the protection of electronic components against voltage spikes, polarity reversal and water infiltration.

Installation accessories are provided (waterproof formwork and plasterboard spring).

The length of power cable is 0.4m; on request: 1.5m, 5m, 10m, 15m.



alluminio

acciaio

ottone



power	3W - single chip Power Led
power supply	24V constant voltage
insulation class	III class
IP rating	IP66 / IP68
IK rating	IK10
operating temperature	-20°C / +50°C
size	Ø 29 x 44 mm
lumen output	up to 153 lm (3000K)
beam angles	circular 40°
CCT	2700K - 3000K - 4000K
CRI	> 90
BIN selection	2 Step MacAdam

lifetime	L80 B10 50.000 h
body materials	- anticorodal 6082 anodized 20µ aluminium - 316L stainless steel
frame materials	- anticorodal 6082 anodized 20µ aluminium - 316L stainless steel - brass
screen	tempered extra-clear glass - 8 mm
installation	with outer case / plasterboard spring
electrical connection	parallel
protection system	IdroSkud® System - polarity reversal protection - voltage spikes protection - water infiltration protection
made in	ITALIA  

QUANTUM CEILING

OUTDOOR CEILING MOUNTED



QUANTUM CEILING 1



QUANTUM CEILING 2

The QUANTUM series is enriched with a range of ceiling mounted luminaires, which maintain the family feeling, expanding the types of applications.

Ceiling mounted fixture, suitable for outdoor use (IP65) with an operating temperature range of -20°C / +50°C.

The body is made of aluminium protected by an epoxy polyester paint that guarantees a corrosion resistance of 1500 hours in salt spray.

Four finishes are available: white RAL9003, black RAL9005, anthracite RAL7016, CORTEN.

The light source consists of a single chip power LED (3W or 7W) powered by 220Vac (integrated power supply).



The luminous flux from 125 lm to 316 lm make them ideal to light up terraces, balconies or porches.

The light colour temperature is available variants: 2700K, 3000K, 4000K with CRI > 90.

Optionals for anti-glare (honeycom) are provided.



power	3W and 7W*
power supply	220Vac integrated power supply
insulation class	II class
IP rating	IP65
IK rating	IK 06
operating temperature	-20°C / +50°C
size	Ø 55 x 127 mm Ø 78 x 185 mm
lumen output	up to 227 lm (size 1) and 410 lm (size 2)*
beam angles	15° - 25° - 40° - 20°x43° (size 1), 5° - 20° - 60° - 15°x60° (size 2)
CCT	2700K - 3000K - 4000K
CRI	> 90
BIN selection	2 Step MacAdam

lifetime	L80 B10 50.000 h
body materials	EN AB46100 die-cast aluminum
finishing	first coat with protective primer followed by epoxy polyester for corrosion resistance
colours	- white RAL9003 - black RAL9005 - anthracite RAL7016 - CORTEN - paintable primer
screen	tempered extra-clear glass - 6 mm black silkprinted
electrical connection	to power line
made in	ITALIA  

* Technical data estimated from the prototypes



8942195

MIZAR
è un marchio di
REER SpA
Via Carcano 32 10153 Torino
ITALIA
Tel +39 011 9969833

mizar.it